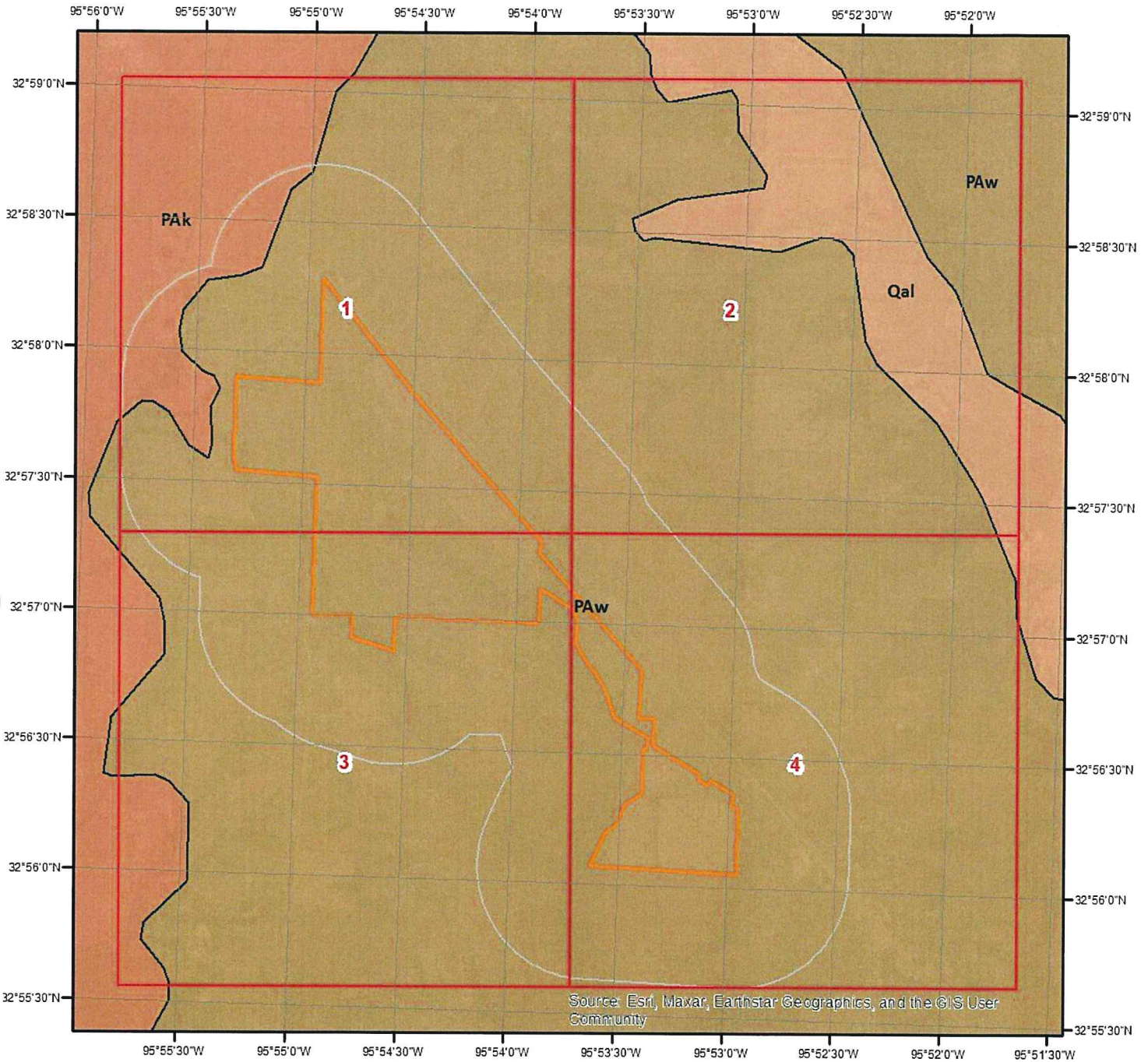
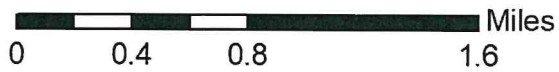


Geologic Information

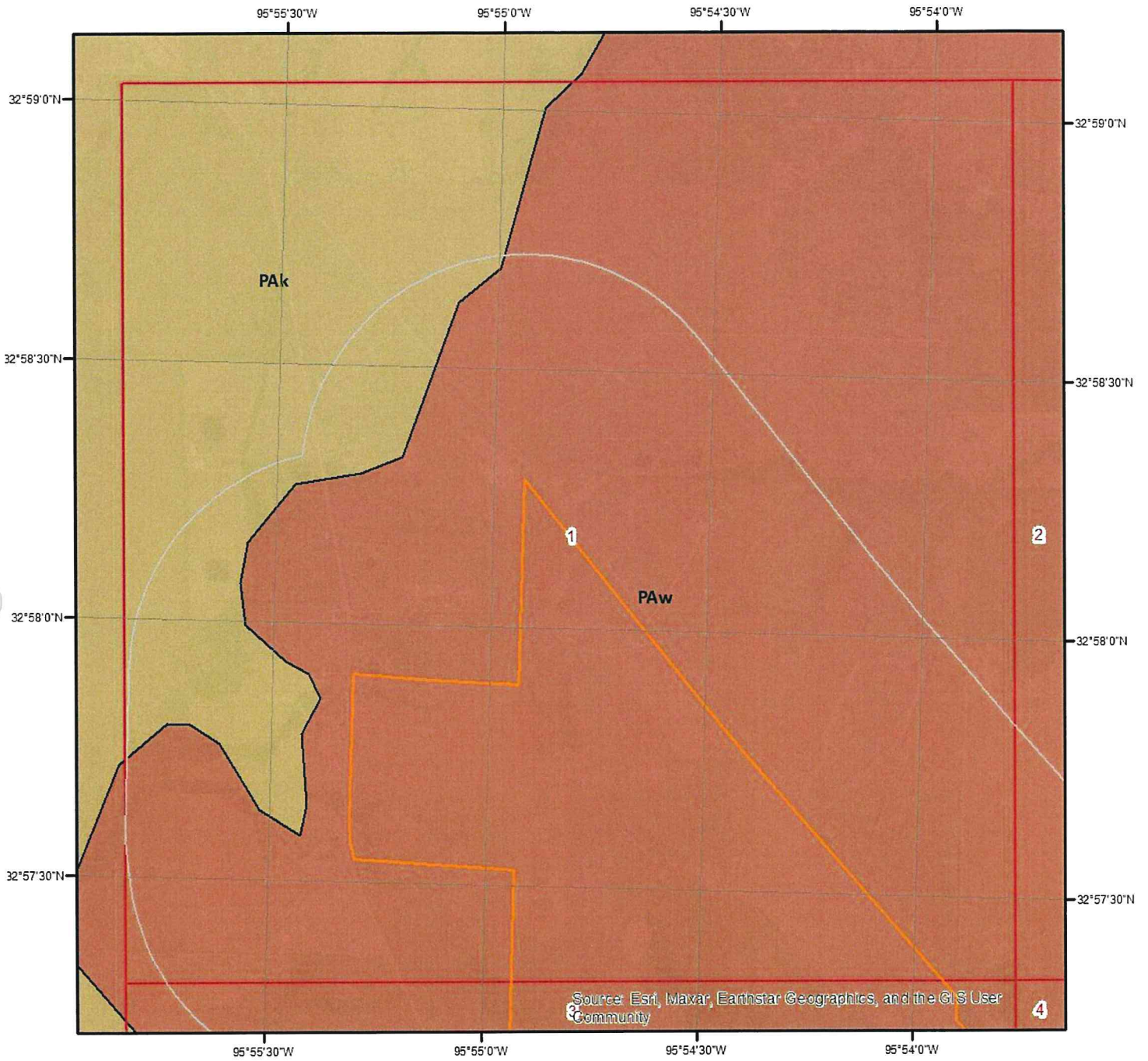


Geologic Units

This maps shows geologic units in the area. Please refer to the report for detailed descriptions.



Geologic Information



0 0.2 0.4 Miles

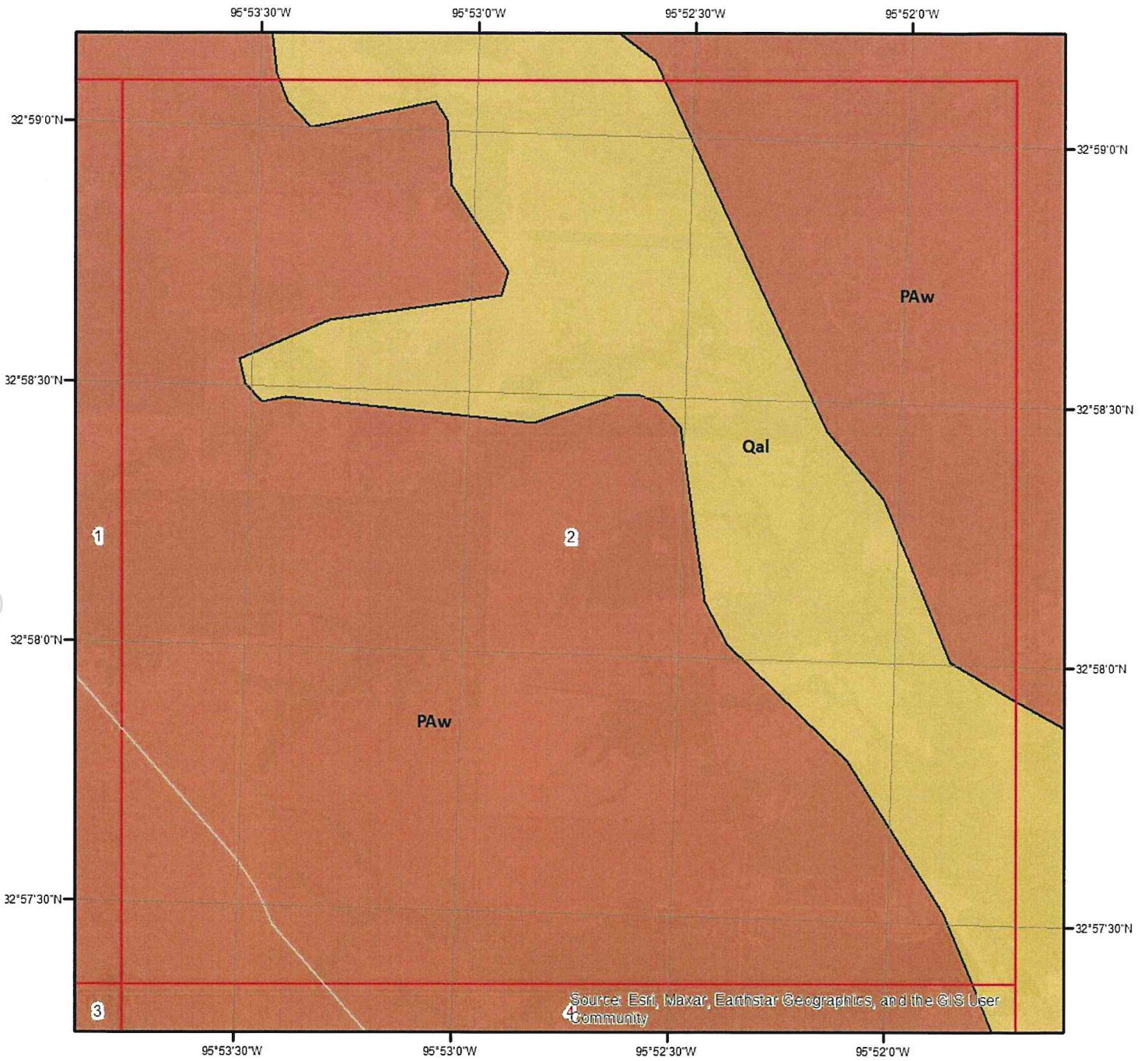


Geologic Units - Page 1

This maps shows geologic units in the area. Please refer to the report for detailed descriptions.



Geologic Information

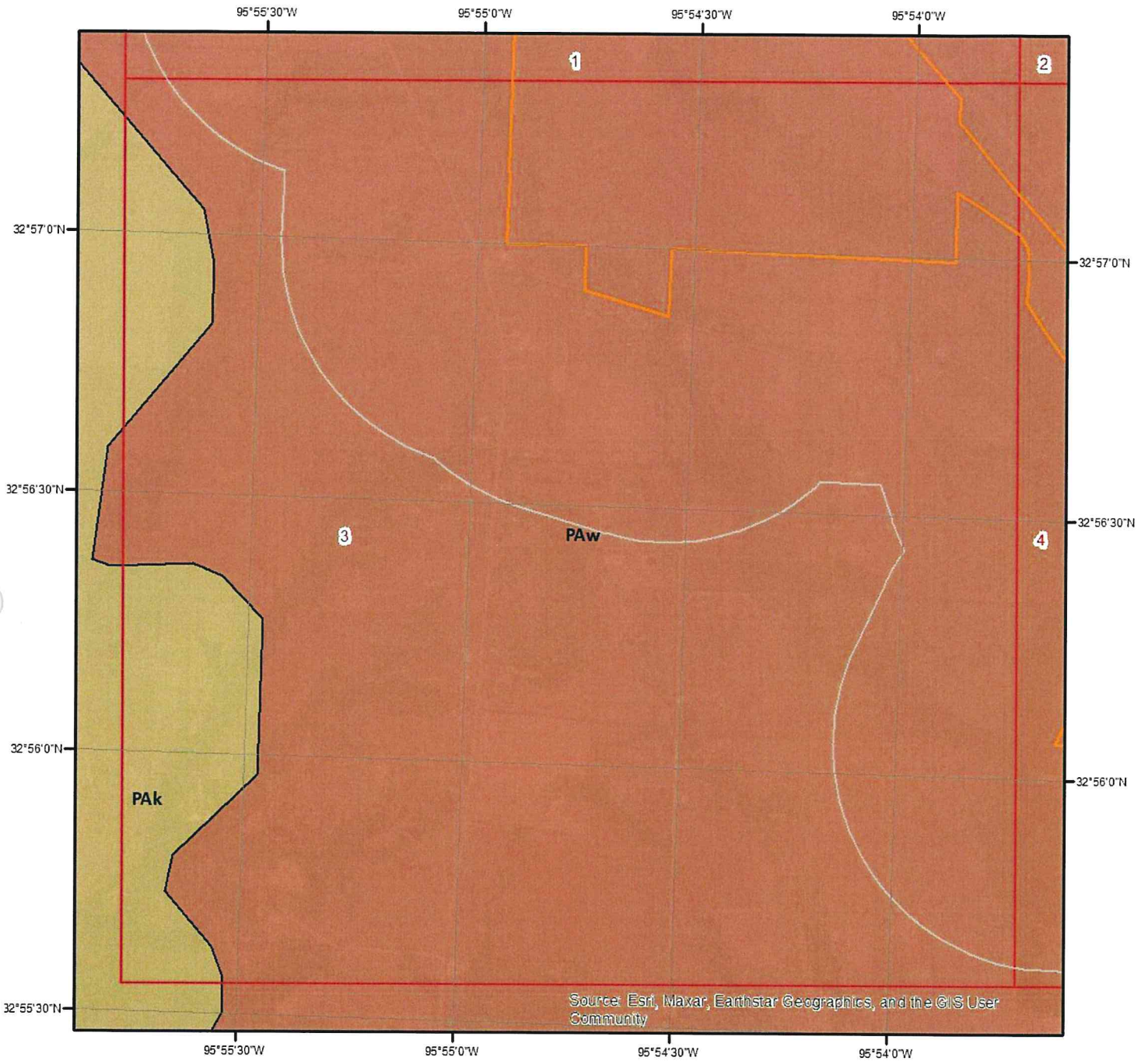


Geologic Units - Page 2

This maps shows geologic units in the area. Please refer to the report for detailed descriptions.



Geologic Information

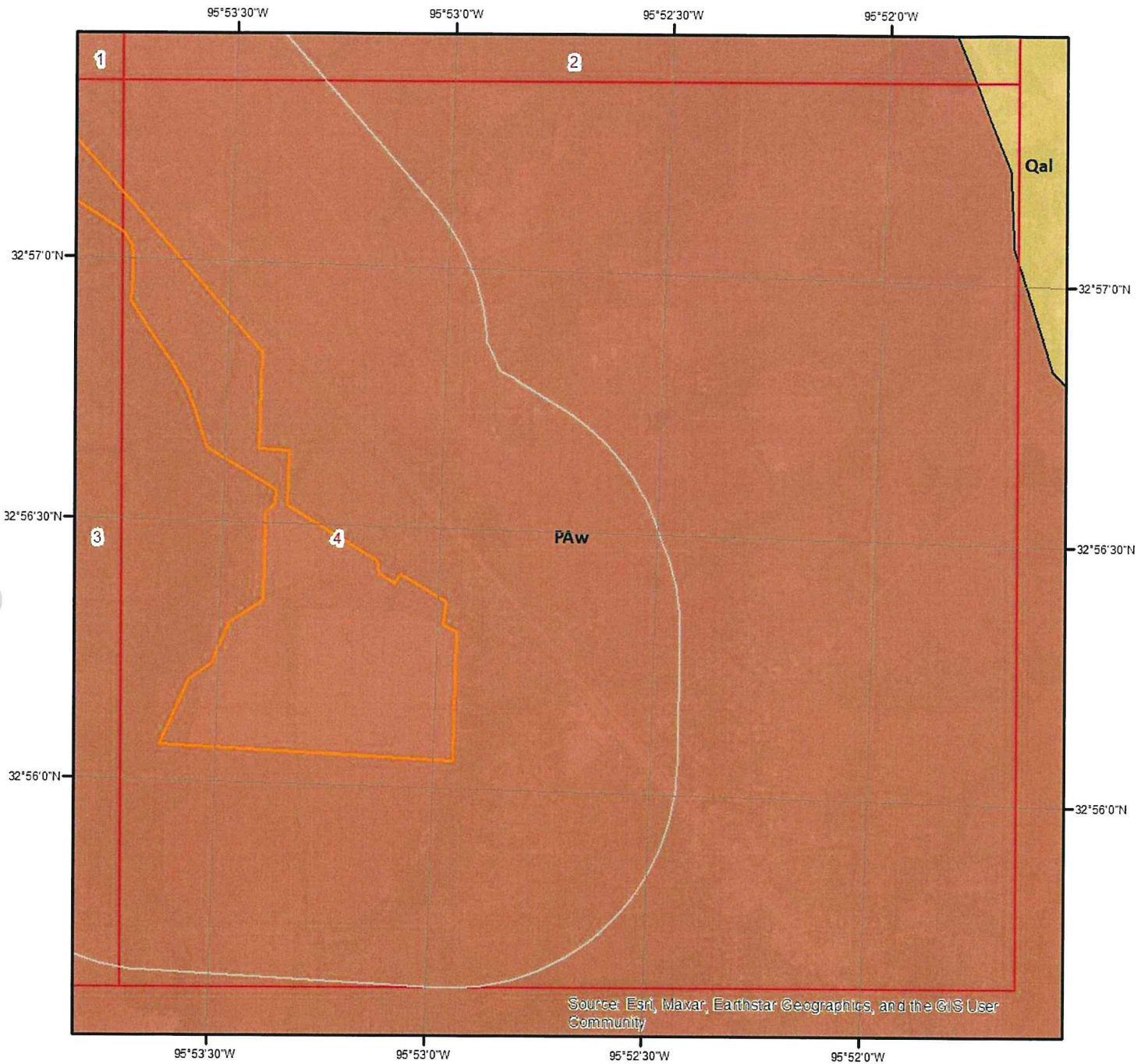


Geologic Units - Page 3

This maps shows geologic units in the area. Please refer to the report for detailed descriptions.



Geologic Information



Geologic Units - Page 4

This maps shows geologic units in the area. Please refer to the report for detailed descriptions.



Geologic Information

The previous page shows USGS geology information. Detailed information about each unit is provided below.

Geologic Unit PAK

Unit Name:	Kincaid Formation
Unit Age:	Phanerozoic Cenozoic Tertiary Paleocene
Primary Rock Type:	sand
Secondary Rock Type:	clay or mud
Unit Description:	Kincaid Formation

Geologic Unit PAW

Unit Name:	Wills Point Formation
Unit Age:	Phanerozoic Cenozoic Tertiary Paleocene
Primary Rock Type:	clay or mud
Secondary Rock Type:	limestone
Unit Description:	Wills Point Formation